



GENERAL

QUALITY AND SAFETY:

This projection screen is in accordance with the safety regulations in DIN standard 19045. The screen fabric is comply with DIN 4102 part 1 and the specifications of the according data sheet.

WARRANTY:

The warranty period for production deficiencies is 5 years for the frame elements and 24 months for the projection surface.

DECOFRAME projection screens are developed for indoor use only. Any damage and consequential damage caused by outdoor use is not covered by warranty.

Frame elements: The frame elements and additional elements are maintenance-free!

PROJECTION SURFACE:

Following handling instructions have to be adhered:

! Do not bring printed and coloring objects (instructions, magazines, etc.) in contact with the projection surface.

! Do not mark the projection surface!

Colors penetrate the projection surface and cannot be cleaned anymore!

When transporting the projection surface at low temperatures, do not attach the surface unless it has reached its full elasticity at room temperature.

CLEANING OF THE PROJECTION SURFACE:

Use a white clean cotton cloth saturated with clear water (optionally mild soap water) and gently wipe the area in one direction (no circular motion). Wipe dry with another cotton cloth.

To clean a stubborn stain, use methylated spirit and follow the same procedure.

Clean rear projection surfaces in case of imperative only!

Subject to modifications, errors expected !

FRAME SET UP



Frame elements and projection surface are delivered in two separate cardboard boxes. Please mind the warnings on the packaging.



In case of more than four frame elements or center supports and horizontal strut elements Please follow the instructions under point 13-23.



Lay out the frame elements according to the labeling as shown on the picture.



The corners are each connected with one big and two small angle brackets.



Slide in the angle brackets into the corresponding slots of the two to be connected frame elements.



Put the frame elements together without a gap and fix them with the enclosed allen key at the hexagon socket set screws.

MOUNTING



In case of center supports and horizontal struts we recommend to attach the projection surface first and then please follow the instructions under point 16-23.



Do not open the packaging of the surface before the assembly of the basic frame is finished to avoid damages of the surface by the sharp edges of the frame profiles.



Lay out the surface according to the labeling on the backside of the surface into the frame. Take care that the ground is absolutely clean!



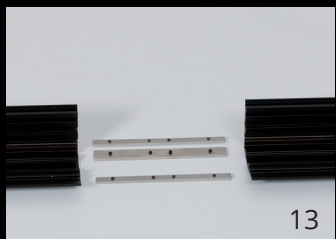
The surface is attached to the frame at the circumferential slot with its hooks. Middle struts or other support elements are mounted afterwards. See point 16 to 22.



The DecoFrame is mounted to the wall with its preinstalled keyhole brackets, which can be adjusted individually.



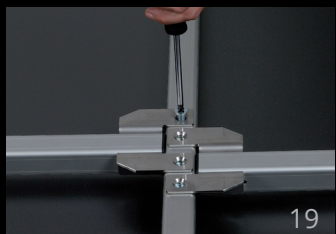
CENTRE SUPPORT AND HORIZONTAL STRUT



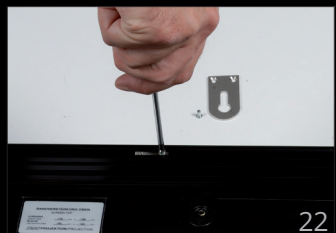
In case of divided profiles, linear connectors are used to join them. Slide in the connectors each half the length in the corresponding slots of the two to be connected frame elements. Put the profiles together without a gap and fix them with the enclosed allen key at the hexagon socket set screws.



Center supports are mounted at the preinstalled connectors. Take off the screws and place the center support according to the pictures in the Decoframe and secure it with the three philips head countersunk screws.



Horizontal struts are mounted at the preinstalled connectors on the frame side and on the center supports at the M6 thread inserts with countersunk screws.



As an option with large Decoframes additional small key-hole plates can be attached for wall mounting.

