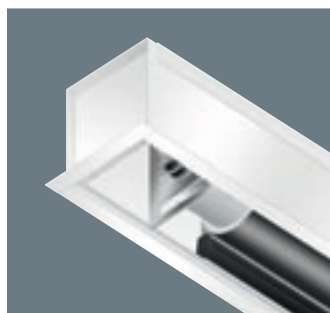




Tensioned **Descender** **Large Electrol**

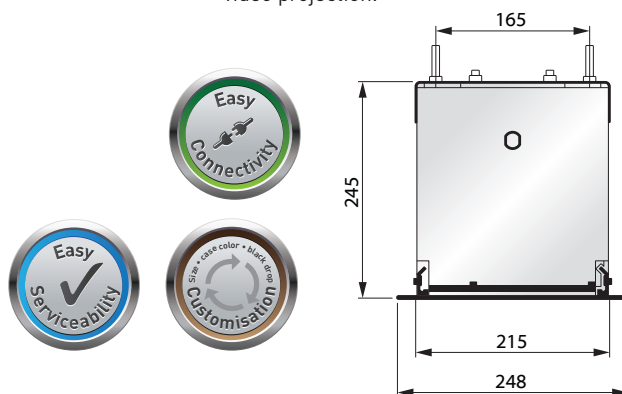
- Ceiling recessed projection screen for medium to large venue applications with a tab-tensioned projection surface for a perfectly flat viewing area. Available in widths from 3.5 to 4.5 metres.
- Easy Serviceability System: once installed, the motor and screen surface remain accessible making adjustments and carrying out maintenance possible.
- Easy to build into existing non-modular ceilings.
- The case and the projection screen surface can be made to exactly the right size and the case is available in any colour for optimal integration into any interior.
- The motor is equipped with electric locks to prevent inadvertent unrolling and features thermal overload cut-off.
- The projection surface is extremely flat, making it suitable for all types of data and video projection.



Easy Serviceability System



Perfect integration into the ceiling



Available aspect ratios

16:10

16:9

4:3

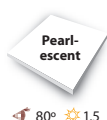
Available dimensions

Minimum width: **350 cm**
Maximum width: **450 cm**

Available screen surfaces



120° 1.0



80° 1.5



60° 1.3

Accessories



Easy Install Plug and Play Relay Box with Potential-Free Contacts



Easy Install Plug and Play RF Remote Control



Easy Install RF Wall-Mounted Transmitter



Screen case



Screen surface assembly

2-step installation

- Order the screen case separate from the screen surface. Install the screen case during the rough-in stages and the Screen Surface assembly at a later stage preventing any damage.
- The Screen Surface assembly includes the bottom panel of the screen, motor and screen surface.
- Order the case first and decide the aspect ratio and screen surface at a later stage ensuring optimal flexibility.

