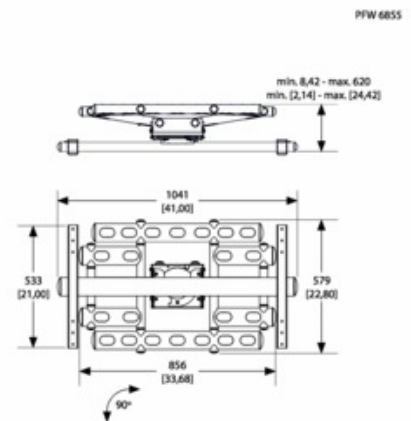


## PFW 6855 Display wall mount - turn & tilt, 227 kg

PFW 6855 is an articulating wall mount for displays up to 227 kg / 500 lb. PFW 6855 holds displays with a vertical VESA mounting pattern of 300-400-500 mm and horizontal max. 907 mm.

<b>Min. size of TV</b>	65"
<b>Max. TV size</b>	85"
<b>Turn (°)</b>	90
<b>Tilt (°)</b>	4
<b>Guarantee</b>	5 years
<b>Hole pattern (mm)</b>	min 200x300 / max 907x300 min 200x400 / max 907x400 min 200x500 / max 907x500



## PFW 6855 Display wall mount - turn & tilt, 227 kg

The positive and negative tilt adjustment allows the mount to be installed level and plumb. The dual articulating arms allow even the heaviest display to be pulled away from the wall for service or alignment. The mount features a 90 degree rotation which allows the display to be installed in landscape, portrait or any other position inbetween. Also see PFW 6856 for Panasonic 85 inch displays and PFW 6857 for Panasonic 103 inch displays.

## Features

- VESA fitment horizontal max. 907 mm, vertical 300 / 400 or 500 mm
- Rotating function, 90 degrees, for easy landscape-portrait position change
- Perfect for recessed installations
- Turn, tilt and reach functions

## Logistic information

<b>EAN Code Product</b>	8712285323201
<b>Net weight (kg)</b>	41