

ShareLink 200

WIRELESS COLLABORATION GATEWAY

Transforms any room into a
wireless collaboration space

- ▶ Wirelessly share content from laptops, tablets, and smartphones
- ▶ Simultaneous content display from up to four different devices
- ▶ Dropbox integration provides easy access to content stored in the cloud
- ▶ Collaboration mode allows anyone to display content
- ▶ Moderator mode ensures only approved content is displayed
- ▶ WebShare™ technology enables attendees to view content on personal devices via a Web browser



ShareLink 200

ShareLink 200 N



Extron Electronics
INTERFACING, SWITCHING AND CONTROL

Introduction

The Extron **ShareLink 200** Wireless Collaboration Gateway enables anyone to present content from a laptop, smartphone, or tablet on a display, transforming any meeting room into a collaboration space. ShareLink™ technology supports simultaneous display of slides, documents, graphs, and photos from up to four devices without needing a cable. It is compatible with Windows® and OS X® computers as well as Apple® and Android® smartphones and tablets. It also includes a moderator mode to ensure only approved content is displayed. In spaces with sight line concerns, slides can be viewed on personal devices via a Web browser. The professional capabilities of the ShareLink 200 wireless and network models provide easy integration of mobile devices into meeting and huddle rooms, collaborative spaces, and presentation environments.

Share Content Wirelessly

Designed for Bring Your Own Device - BYOD environments, the gateway is available in two models. The ShareLink 200 model includes an integrated wireless access point - WAP. Users connect directly to the ShareLink 200 via a Wi-Fi connection. A Gigabit Ethernet port provides a high-speed network connection. The ShareLink 200 wireless model is ideal for creating a stand-alone wireless collaboration and presentation system or adding wireless capabilities to a more traditional wired solution.

The ShareLink 200 N does not include a WAP, and works in concert with a facility's existing wireless networks. Users connect to the room's WAP via a Wi-Fi connection to access the ShareLink 200 N. This network-only version includes a Gigabit Ethernet port for a high speed connection, and provides the same user experience as the wireless model.

Video from a single personal device is shown full screen or in one of four windows. When multiple devices are connected, up to four sources are displayed simultaneously to enhance collaboration. A variety of content types can be shared, including

a simple image, document, or slide show presentation. The MirrorOp® for Extron ShareLink™ app enables wireless connection of a mobile device via the Wi-Fi network. This application is free and available for download from the iTunes® App Store or Google Play®.

Windows or an OS X computers access the ShareLink 200 via a wired or wireless network connection. The user enters the IP address of the ShareLink 200 unit into a Web browser, and then follows the instructions to run or install the ShareLink 200 software. Alternatively, the user can run the client application directly from a USB flash drive without installing software onto the computer. The application enables the sharing of images, documents, and presentations, as well as full-motion video at 30 fps.

Ideal for Collaboration

The default collaboration mode allows any attendee to easily send content to the display and control the presentation. This can enhance interaction during brainstorming sessions, team meetings, group studies, and other collaborative environments.

Moderated Presentation

ShareLink 200 offers a moderator mode that enables centralized control over device access and presentation. The moderator decides which users can access the display and how the content is presented, ensuring only approved content is displayed. This mode is ideal for educational environments, allowing the instructor to have complete control of the presentation on the main classroom display.

Share Content across Multiple Displays

The ShareLink 200 includes the capability to enable a Windows or OS X computer to communicate with multiple ShareLink 200 units on a network. The technology allows a computer to send the same content to as many as four displays. This is useful for larger spaces with multiple displays or adjacent rooms used for overflow.

Enables a Secure Connection

ShareLink 200 features security authentication consisting of randomly generated or user-defined security codes to ensure only approved devices can access the system and share content. This capability also protects against unintentional data sharing between adjacent spaces. The integrated WAP on the wireless model uses 802.11b/g/n wireless standards, enabling local connections to segment public and private networks.

Convenience of Power over Ethernet

Each ShareLink 200 can be powered locally using the included power supply or remotely over the Ethernet connection. By using Power over Ethernet – PoE, only one network cable is needed in order to accommodate data and power requirements.

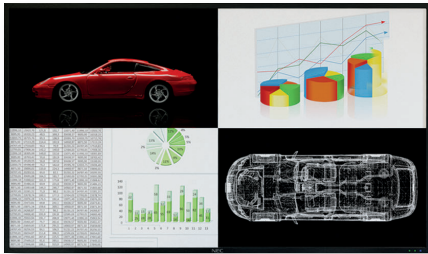


Features

Wirelessly share content from laptops or personal mobile devices

Allows users to connect a wide variety of devices to the system wirelessly or through a wired LAN connection.

Supports Microsoft Windows® and OS X® computers as well as Apple® and Android® smartphones and tablets



Simultaneous content display from up to four different personal devices

Fosters collaboration and discussion by displaying multiple sources, and eliminates the need to constantly change among content sources in team environments.



Dropbox integration within the MirrorOp for Extron ShareLink app allows easy access to content stored in the cloud

Collaboration mode allows any attendee to display content and control the presentation

Enables content display from any connected device to enhance interactivity in brainstorming sessions, team meetings, and other collaborative environments.

Moderator mode ensures only approved content is displayed

Enables the moderator to select which users can access the display and how the content is displayed.

Content sharing from a computer to as many as four ShareLink 200 units on the network

Allows a Windows or OS X computer to send content to multiple ShareLink 200 units on the network, supporting up to four displays.

Full-motion video playback from laptops

Enables display of media files from a Windows or OS X computer at up to 30 fps for a smooth viewing experience. The computer can use a wired or wireless connection.

Remote control of the ShareLink 200 USB Player over the network

Enables an Extron IPCP Pro control processor to be used for selection and playback of content stored on a USB flash drive plugged into a ShareLink 200 unit.

Security codes ensure content is delivered only to the selected display devices

Randomly generated or user-defined security authentication codes prevent unintentional sharing or display of content within adjacent spaces.

Displays content directly from a USB flash drive

Enables presentation of slides, documents, graphics, images, and video files stored on a USB flash drive without requiring a laptop or computer. USB ports also support connection of HID devices such as a keyboard or mouse.

Full screen or four-window display

Full screen display of content from a single personal device or simultaneous display of multiple devices in four windows on a single display.

WebShare™ technology enables attendees to view slide images on personal devices via a Web browser

ShareLink 200 enables meeting content to be displayed on a participant's mobile device. This is ideal for attendees who cannot easily view the main display.

Power over Ethernet, or PoE, eliminates the need for a local power supply

Offers easy installation, reduced labor, and fewer devices to install. Data and power are delivered over the single cable.

Gigabit Ethernet

Provides a high-speed data link to a network or the Internet for fast and easy access to the Web or other network resources.

Wireless model includes an integrated wireless access point - ShareLink 200

Offers a local connection point for attendees, enabling segmentation of guest and private networks.

Network-only model connects to an existing wireless network - ShareLink 200 N

Leverages an existing wireless network infrastructure for the connection of mobile devices.

Includes user-friendly software for screen mirroring, advanced control, and configuration

Three USB ports for peripheral support

Allows connection of a USB keyboard or mouse, and enables simple annotation capabilities with touch-sensitive devices.

HDMI and VGA video outputs

Offers flexibility to work with digital and analog display devices or a system switcher to easily add wireless capabilities to existing video systems.

SNMP support for remote monitoring

Supports network monitoring for the operational health of network-attached devices.

Plenum rated - meets UL 2043 for heat and smoke release

Front-mounted antennas for easy rack installation - ShareLink 200 model

Ensures the best possible reception of wireless signals. Antennas pivot for simplified installation behind a flat panel display.

Compatible with Extron mounting solutions

Easy mounting with Extron low-profile and under-desk mounts, under-table kits, and rack-shelf options.

1" (2.5 cm) high, three-eighths rack width metal enclosure

Compact, low profile enclosure allows discreet installation within a lectern or behind a flat panel display.

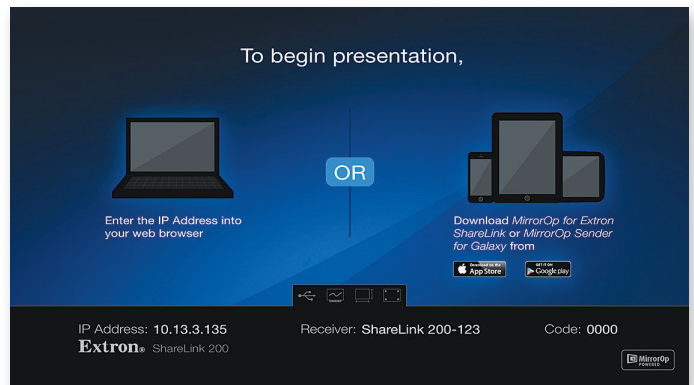
Energy-efficient, external universal power supply included

Provides worldwide power compatibility.

Intuitive User Interface

Welcome Screen

Upon power up and initialization, the ShareLink 200 displays the welcome screen on the main presentation display. The upper portion of the screen includes a graphic with simple instructions for connecting personal devices to the system. It enables users to quickly connect and share content from laptop or desktop computers as well as mobile phones and tablets. It can easily be customized to meet the needs of an organization, such as displaying a corporate or university logo or other image.



The lower portion of the welcome screen provides important information for accessing the system, including the IP address, Wi-Fi name or SSID, and the security code. It also includes a tools menu to enable presenting content directly from a USB flash drive, using the display as an interactive whiteboard, or resizing the display.

Mobile App

For content sharing from a smartphone or tablet, the MirrorOp® for Extron ShareLink™ app enables wireless connection of the mobile device. Dropbox® integration within the app provides easy access to content stored in the cloud. The app is free and available for download from the iTunes® App Store or Google Play®.



Presentation from a USB Flash Drive

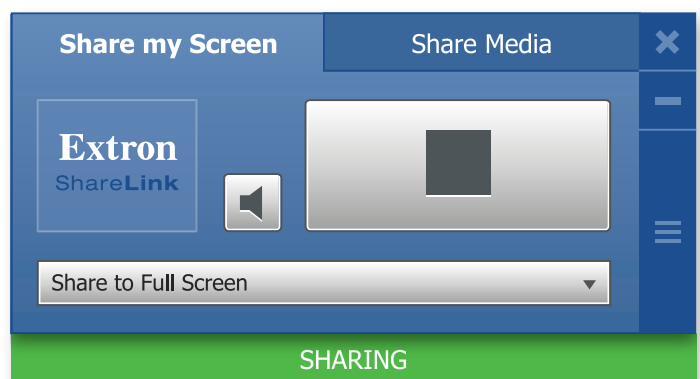
An easy-to-use on-screen display enables content selection and playback from a USB flash drive. The USB flash drive, along with a mouse or keyboard, is plugged directly into any of the three USB ports on the ShareLink 200. The USB Player can also be controlled over the network with an Extron IPCP Pro control processor.

Computer Software

The ShareLink 200 software offers an intuitive user interface for simplified operation by non-technical users. With this software, any content that is on the computer screen can be mirrored to the display. The easy-to-use menu provides playback control, visible indication of sharing status, and display options from full screen to placing the image in any one of four windows on the main display. A second tab enables selection and control of content stored locally on the computer, including image, video, and audio files.

Share Content Wirelessly

Whether presenting or sharing BYOD content from a laptop, flash drive, tablet, or smartphone, the ShareLink 200 ensures easy integration of personal devices into professional AV systems for huddle rooms, interactive collaborative spaces, and larger presentation environments.



The ShareLink 200 software offers an intuitive user interface.

Overview

Power over Ethernet – PoE

The ShareLink 200 can be powered by a PoE connection, eliminating the need for a local power supply.

USB ports on front and rear panels

Provides easy access for a keyboard or mouse, and enables simple annotation capabilities.

Compact, low profile enclosure

The 1" (2.5 cm) enclosure can be rack mounted or discreetly installed behind a flat panel display.

Front-mounted antennas for easy rack installation - ShareLink 200 only

Front-mounted antennas provide an unobstructed access for optimal reception.

Gigabit Ethernet port

High-speed data link for accessing the Internet or other network resources.

Stereo audio output

Line-level audio output connects to the room audio system.

HDMI and VGA video outputs

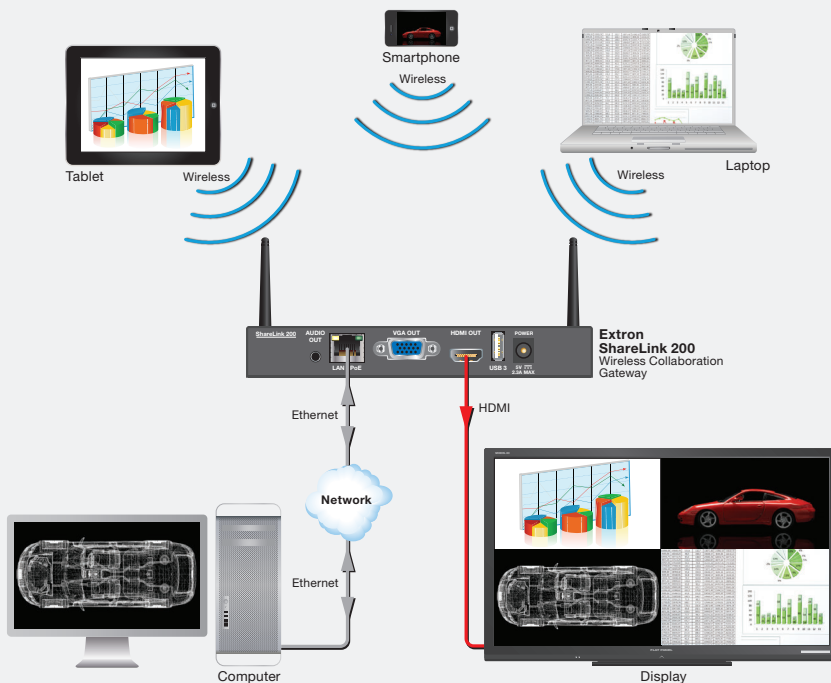
The ShareLink 200 supports displays and AV systems with digital and analog inputs.

Pivoting antennas - ShareLink 200 only

The antennas can be repositioned to accommodate multiple mounting options, such as vertical mounting behind a flat panel display.



APPLICATION DIAGRAM



Specifications

SOFTWARE AND CONTROL OPTIONS

Software	ShareLink™ 200 Software
Operating systems	Windows® XP/7/8, Mac® OS X (10.7-10.10)
Supported formats	
Video file formats	MP4, MPG, MPEG, MPEG-2 TS, AVI, MOV, MKV, WMV
Audio file formats	MP3, WAV, WMA, AAC
Image file formats	JPG, BMP, PNG, GIF
Supported codecs	
Video codecs	MPEG-2, MPEG-4 (Microsoft MPEG-4 v1-3 is not supported), Motion JPEG, WMV9 (only WMV3/WVC1 is supported)
Audio codecs	LPCM, AAC, MP3, WMA
Image codecs	JPG, BMP, PNG, GIF

Mobile apps

MirrorOp® for Extron ShareLink	
Operating systems	Apple® iOS 7.0 or later, Android™ 4.0 or later
Supported formats	Image file formats: JPEG, PNG Document file formats: Microsoft® Word (.doc, .docx), PowerPoint (.ppt, .pptx), Excel (.xls, .xlsx); PDF
MirrorOp Sender for Galaxy	
Operating systems	Android 4.0 or later
Control function	Full mirroring of device screen

NETWORK CONNECTIVITY

ShareLink 200 only	
Standards	IEEE 802.11 b/g/n 2.4 GHz
Security Encryption Standards	IEEE Standard 64/128 bit WEP, WPA PSK, WPA2 PSK, WPA Enterprise, WPA2 Enterprise
Wireless link coverage	Up to 300 feet (100 m), depending on environment
ShareLink 200 and ShareLink 200 N	
Standards	IEEE 802.3 (10BASE-T), IEEE 802.3u (100BASE-TX), IEEE 802.3ab (1000BASE-T)

VIDEO OUTPUT

Number/signal type	1 HDMI 1 RGBHV
Output resolution	800x600 @60Hz, 1024x768 @60Hz, 1280x720 @60Hz (720p) (default), 1280x768 @60Hz, 1280x800 @60Hz, 1360x768 @60Hz, 1440x900 @60Hz, 1600x1200 @60Hz, 1920x1080 @30Hz (1080i), 1920x1080 @60Hz (1080p)

AUDIO OUTPUT

Number/signal type	1 digital, 2-channel PCM 1 analog stereo, unbalanced
---------------------------	---

ETHERNET PORT

Ethernet data rate	10/100/1000Base-T, half/full duplex with autotdetect
---------------------------	--

USB PORTS

Number/signal type	3 high-speed USB 2.0
Connectors	3 USB type A connectors
USB standards	USB 2.0, USB 1.1, USB 1.0 compatible
USB player feature	
Supported formats	
Video file formats	MP4, MPG, MPEG, MPEG-2 TS, AVI, MOV, MKV, WMV

Audio file formats	MP3, WAV, WMA, AAC
Image file formats	JPG, BMP, PNG, GIF
Document file formats	Microsoft Word (.doc, .docx), PowerPoint (.ppt, .pptx), Excel (.xls, .xlsx); PDF
Supported codecs	
Video codecs	MPEG-2, MPEG-4 (Microsoft MPEG-4 v1-3 is not supported), Motion JPEG, WMV9 (only WMV3/WVC1 is supported)
Audio codecs	LPCM, AAC, MP3, WMA
Image codecs	JPG, BMP, PNG, GIF

GENERAL

Power supply	External Input: 100-240 VAC, 50-60 Hz Output: 5 VDC, 2.6 A, 13 watts
Power input requirements	5 VDC or Power over Ethernet (PoE 802.3at, class 0)
Power consumption	
Device and power supply	11.8 watts
Power over Ethernet (PoE)	Complies with PoE 802.3at, class 0 (type 1)
Cooling	Convection, no vents
Thermal dissipation	
Device and power supply	13.3 BTU/Hr
Mounting	
Rack mount	Yes, with optional 1U rack shelf
Furniture mount	Yes, with optional MBU 125 mounting kit
Enclosure type	Metal
Enclosure dimensions	1.0" H x 6.51" W x 3.3" D (1 inch high, 3/8th rack wide) (2.5 cm H x 16.5 cm W x 8.5 cm D) (Depth excludes connectors.)
Product weight	1.0 lb (0.5 kg)
Vibration	ISTA 1A in carton (International Safe Transit Association)
Regulatory compliance	
Safety	UL, c-UL, CE UL Listed for use in plenum air handling spaces: meets UL 2043 for heat and smoke release
EMI/EMC	CE, C-tick, FCC Class B, ICES, VCCI Class B
Environmental	Complies with the appropriate requirements of RoHS, WEEE.
Warranty	3 years parts and labor

Model	Version Description	Part number
ShareLink 200	Wireless Collaboration Gateway - with WAP	60-1508-01
ShareLink 200 N	Collaboration Gateway – Network Version - no WAP	60-1508-02

Mounting Hardware

Model	Version Description	Part number
HRB 109	1U Basic Half Rack Shelf, gray	60-1251-10
HRU 109	1U Universal Half Rack Shelf Kit, gray	60-1251-20
RSF 123	1U 3.5" Deep Rack Shelf Kit, Gray	60-190-20
RSB 123	1U 3.5" Deep Basic Rack Shelf, Gray	60-604-21
MBU 125	1U, 1/2 Rack Width Low-Profile Mount Kit	70-077-01
UTS 100	Primary Shelf, gray	70-1028-01
UTS 150	Secondary Shelf, gray	70-1028-02

For complete specifications, please go to www.extron.com
Specifications are subject to change without notice.

WORLDWIDE SALES OFFICES

Anaheim • Raleigh • Silicon Valley • Dallas • New York • Washington, DC • Toronto • Mexico City
Paris • London • Frankfurt • Stockholm • Amersfoort • Moscow • Dubai • Johannesburg • Tel Aviv
Sydney • Melbourne • New Delhi • Bangalore • Singapore • Seoul • Shanghai • Beijing • Tokyo

www.extron.com