



# KOMTECH

# Skytower

Design Line

Plenum

Standard+

Standard



Picture: Skytower Design with Nextel painting black

## Skytower variations

quality just from the Standard-Line

The AF-TA Skytower is a perfect combination of superior design and excellent quality of manufacturing. Elegant embedded in the table he enables about a cleverly devised magnetic lock the four side open access to the electrical and data supply.

The modular expansion possibilities of the standard variant are 2x8TE for individual supplements of the modular connector panel program. The connecting plate of the Standard+ version can be defined free. Options for all Skytower models: tower, lights, cover (vat)

### Product characteristic

- Attractive design
- Excellent quality of manufacturing
- Four side access
- Invisible connector panel, even with plugged cables
- Customized mounting
- Modular expandability
- Variable adjustable on different sizes (60-80cm)
- Also available with integrated PI/O-control

### Design

The Design variant of the Skytower was awarded with the prestigious reddot design award. The reserved to the Skytower Design plexiglas plate can be equipped in accordance to customer requests with connectors and technology.

### Plenum

The Plenum variant of the Skytower provides as the Skytower Design a freely definable connector plate made of aluminium. Numerous surface finishes allows the individual adaption to the furniture.

### Standard+

The Skytower Standard+ has a freely definable connector plate, which waives in the contrast to Plenum and Design on the flush-bonded installation of the connectors. The free module place providing the possibility of an connector update.

### Standard

The Skytower Standard is equipped over the existing module places. This standardized production marks the entry level of the Skytower series.



## Skytower Design

### Connector plate in plexiglas design

Plug connections flush with connector plate

### Free definable connector plate:

230V, RJ45 LAN, VGA/ Audio, HDMI ... etc.

**Technology options:** Control unit PI/O, Lighting

**Design options:** Nextel painting RAL, Powder painting RAL, Wet paint NCS, Engraving / Marking

**Mounting options:** Tower, covering (vat)

The Skytower, the "Skytower Design", has absolutely convinced 2011 the judges of the red dot design award, one of the most renowned international product competitions. The jury of highly respected experts has now awarded this desk connector panel with the "red dot: best of the best", a price reserved strictly for top design quality only. The distinguished jury had 4,433 products to choose from when awarding this special price.

### AF-TA Skytower Design - Winner of the reddot design award: Product Design „best of the best 2011“

"The KOMTECH connector panel „Skytower Design“ is a perfect combination of exclusive design and excellent workmanship. Because of the silver powdered surface, the special design of cover and frame and its chamfered edges, the "Skytower Design" created a very special, modern and charismatic touch in conference rooms. The interior, noble rounded with a plexiglass plate, is individual mountable. A sophisticated magnetic catch allows an easy access to the power and data connectors from all four sides. Equipped with a media control, which offers a variety of functions the "Skytower Design" could be adapted customized. Blue lighted keys are integrated spacesaving. This enables the user a quickly access to the control functions even in dark rooms."





## Plenum

## AF-TA Skytower Plenum

**Connector plate aluminium**

Plug connections flush with connector plate

**Free definable connector plate:**

230V, RJ45 LAN, VGA/ Audio, HDMI ... etc.

**Technology options:** Control unit PI/O, Lighting

**Design options:** Nextel painting RAL, Powder painting RAL, Wet paint NCS, Engraving / Marking

**Mounting options:** Tower, covering (vat)

The Plenum variant of the Skytower provides as the Skytower Design a freely definable connector plate made of aluminum. Numerous surface finishes allow the individual adaption to the furniture.



## Skytower Standard+

### Connector plate aluminium

Individual plug connections

### Free definable connector plate:

230V, RJ45 LAN, VGA/ Audio, HDMI ... etc.

**Technology options:** Control unit PI/O, Lighting

**Design options cover and frame:** Powder coating RAL,

Wet paint NCS, Engraving / Marking

**Mounting options:** Tower, covering (vat)

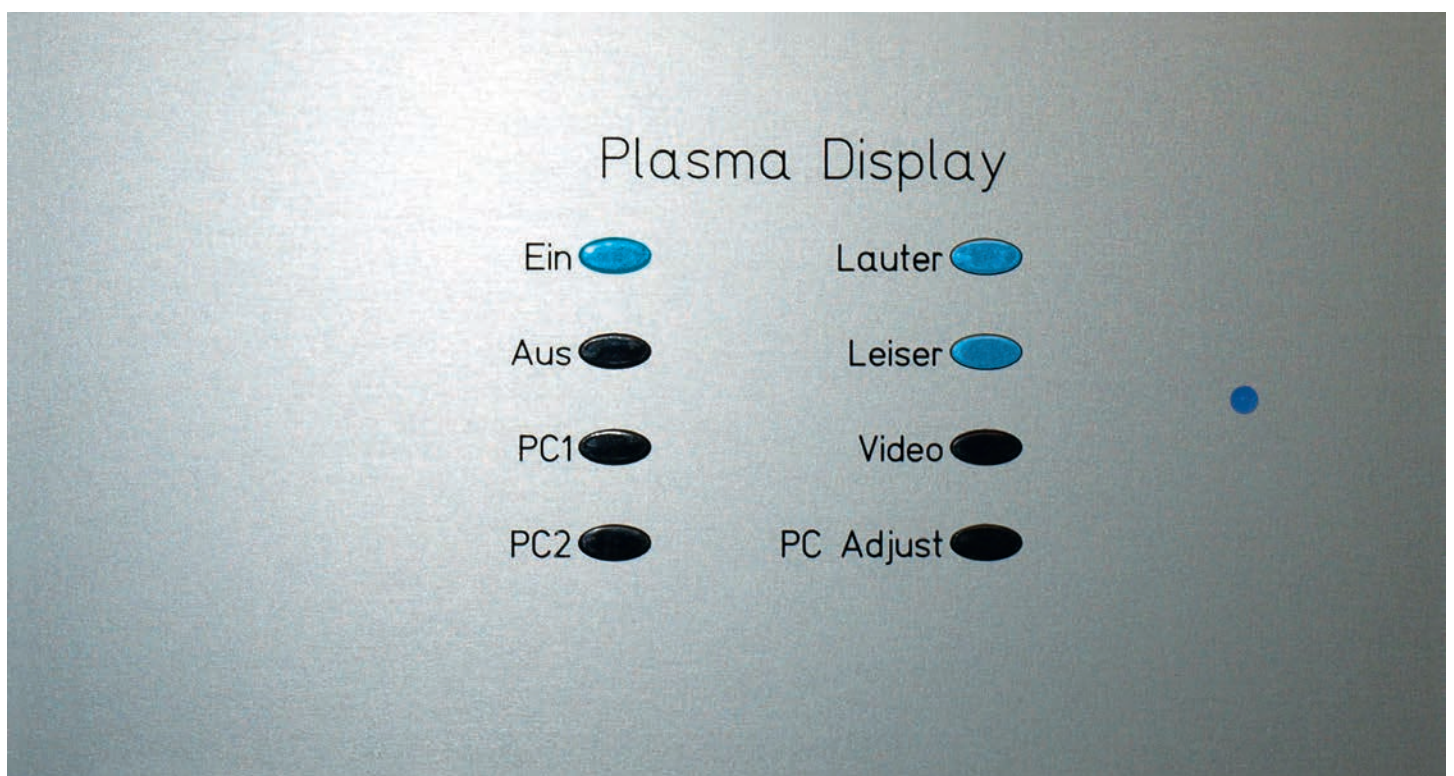
## The KOMTECH PI / O control technology is a media control with multiple functions

A flexible customer solution with diverse features which can be applied versatile and lets almost nothing to be desired. Whether as a conference room control, projector control or as a simple media control. The PI / O control technology can be integrated into almost any environment and is simple programmable with the included configuration software. Macro functions, such as a "Power On" / "power-off" sequence, "toggle" and "Push / Release" features multiple locking levels and time delay command are only a few of the many available options.



The PI / O control technique has two RS232 interfaces and can be extended by a relay, with that room functions such as a screen control, can be realized. The remote relay works independent depending on the project or interlocked.

The space save mounted control panel can be designed individually with up to 8 lockable buttons.





## Standard

### Connector plate aluminium

Standard connections: 230V, RJ45 LAN, VGA/ Audio

### Free definable connector plate:

2x 8TE für HDMI ... etc.

**Technology options:** Lighting

**Design options cover and frame:** Powder coating RAL,  
Engraving / Marking

**Mounting options:** Tower, covering (vat)

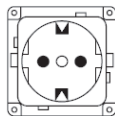


International Skytower by matching outlets:

### AF-TA Skytower

**Schuko-power supply based on DIN VDE**

**Einsetzbar in:** Afghanistan, Andorra, Bulgaria, Chile, Germany, Estonia, Finland, Indonesia, Iceland, (partially) Italy, Netherlands, Norway, Austria, Portugal, Romania, San Marino, Sweden, Slovenia, Spain, South Korea, Hungary, Vatican



### The right computer connection:

Selection of TE modules for data transmission.

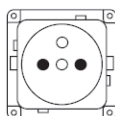
The Skytower take up to 2 x 8TE modules.

**For example:** RJ-45 / USB / Firewire / RS232

### AF-TA Skytower UTE

**Schuko-power supply based on DIN NF**

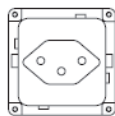
**For use in:** Belgium, France, Monaco, Poland, Slovakia, Czech Republic



### AF-TA Skytower CH

**Schuko-power supply based on DIN SEV**

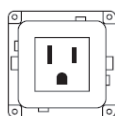
**For use in:** Liechtenstein, Switzerland



### AF-TA Skytower USA

**Schuko-power supply based on DIN USA**

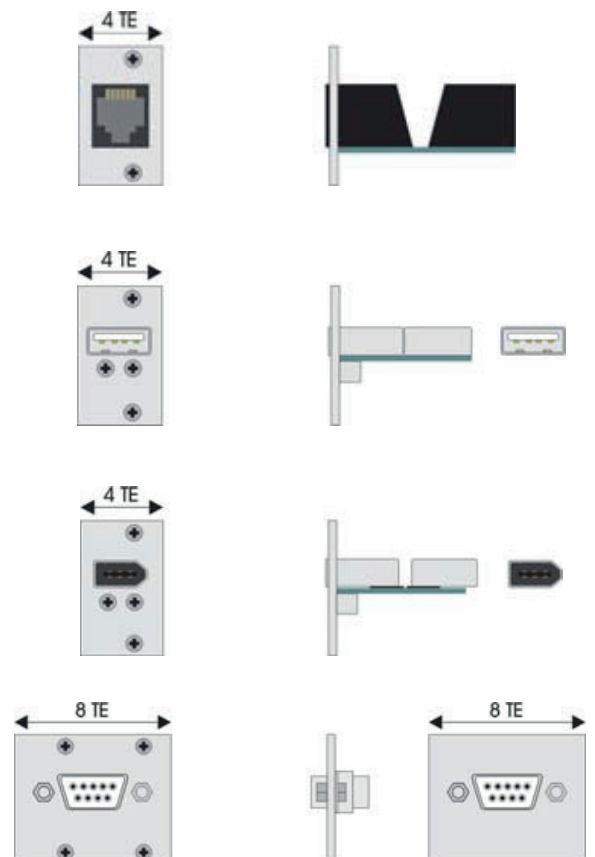
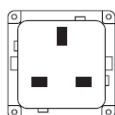
**For use in:** Canada, Mexico, South America (partially), USA



### AF-TA Skytower UK

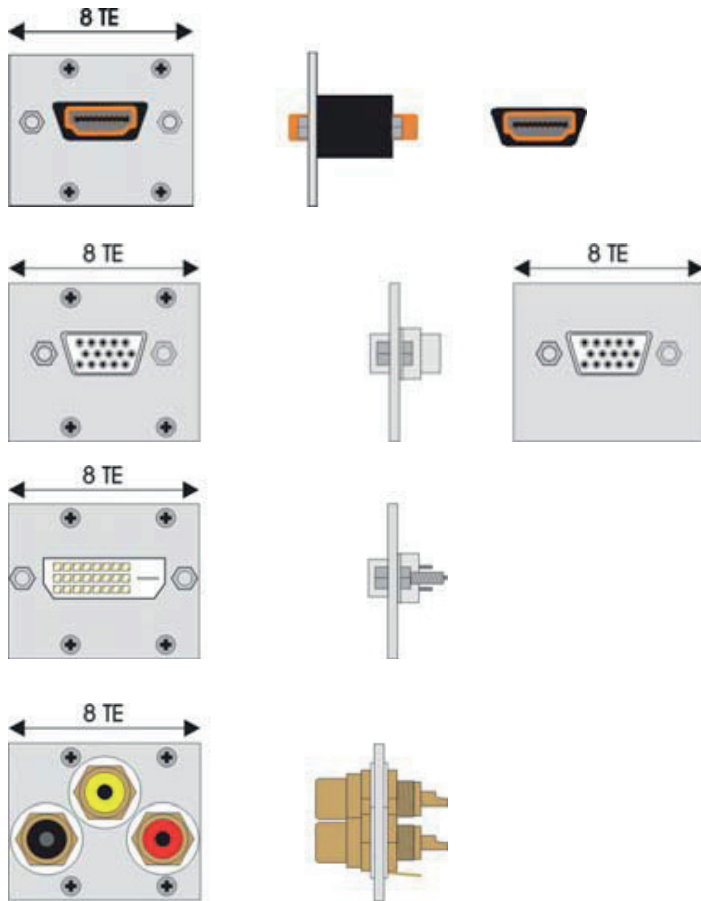
**Schuko-power supply based on DIN UK**

**For use in:** Dubai, Great Britain, Hong Kong, Ireland, Malaysia, Malta, Singapore, Cyprus



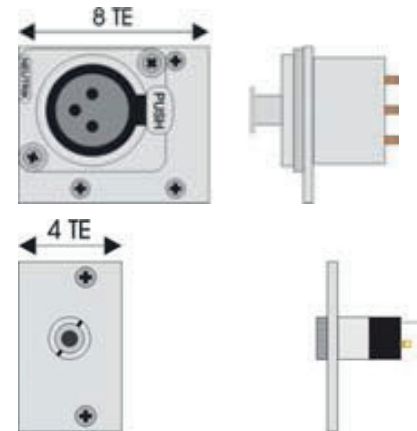
## Feed monitor / video signals:

Selection of TE modules for image transmission  
HDMI / VGA / DVI / Composite + Stereo



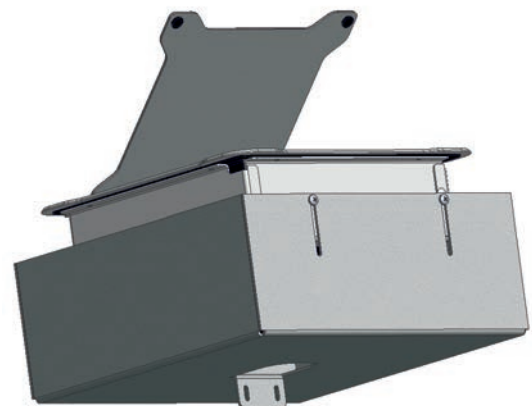
## Sound signals to feed:

Selection of TE modules for sound  
XLR / 3,5mm Stereo phone plug



## Mounting:

The optional cover vat provides a clean appearance under the table.



## KOMTECH manufacture

This brochure is a snapshot and a selection of options and standards. We are happy to consider your wishes and ideas. The Skytower on the left has an changed exterior frame which permits the flush bonded inlet in the table top and a cover plate, which is mounted with hinges.

We offer planners assistance in all aspects. As an OEM manufacturer, we have integrated our products in many conference room furnitures of well-known manufacturers as an individual solution.

Customer  
Planer  
Architect  
Designer

Idea

Partner

KOMTECH

Partner

Individual  
Quality  
Experience  
Support

Solution