

PS600

Desktop Visualizer

- 12x optical zoom with XGA (1024x768) resolution
- 22 fps real-time progressive output with no flickering
- Captures and playbacks 64 images internally
- Camera head rotates 90/180/270 degrees
- Preset shooting areas between A4 and A5
- Built-in CF card slot for more portable storages
- Solid pure digital quality with DVI output
- Seamless switching capability between various video sources
- Split screen for side-by-side image comparison
- Built-in USB and Ethernet connectivity support PC and Macintosh



Key Features



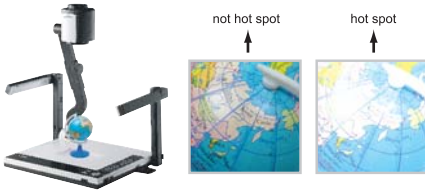
22 fps real-time Progressive Video Output

The PS600 capture images at 22 frames per second. With such high frame-rate, The PS600 user can enjoy an almost real-time live image without flickering.



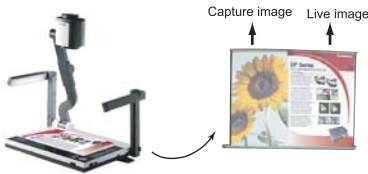
Seamless Switch Between PC and Camera

The PS600 has a built-in seamless video switch which enables seamless video source switching between live video from the camera and the computer.



No Hot Spot

The PS600 is equipped with a pair of flexible lamps, which can be adjusted to avoid potential hot spots and shadows caused by any fixed external illumination.



Split Screen for Side by Side Image Display

The PS600 can display both live image and saved images from Presenter and Computer for side-by-side for comparison.



Built-in CF Card Reader/Writer

PS600 is equipped with a CF card reader and writer for your unlimited expansion need.



Built-in Ethernet port

The PS600 is equipped with an Ethernet LAN port which enable remote control via Local Ethernet network.



Up to 64 Images Storage

Built-in memory can captures and stored up to 64 JPEG images internally .The captured images can be played back as a slide show with the remote control.

Wide Range of Applications

The Desktop Digital Visualizer is a versatile communications tool for applications in many environments.



School Lesson



Study Seminar

User Friendly Interface



1. Localized User Guide

Each button is marked by an easy-to-understand label for their various functions



2. Camera Head Rotation

The camera head rotates 90/180/270 degrees to capture document in other orientation



3. Camera Tilt and Swing

The camera head can tilt and swing from center to front and rear for a total of 180 degrees to capture objects outside of the shooting platform.



4. Unobstructed platform

Purposely designed platform allows very large object to be placed on the performs for capture.



5. Easy access Key Pad

Easy access to commonly used functions for easy operation.

6. Key Lock

Key lock function to avoid accidental pressing of buttons.



7. CF Card Reader/Writer

Built-in card reader/writer support optional memory card for additional storage. Image stored to the optional card is in JPEG format .



8. Wireless Remote Control

The credit card size remote control can be stored on the side of the PS600 platform .



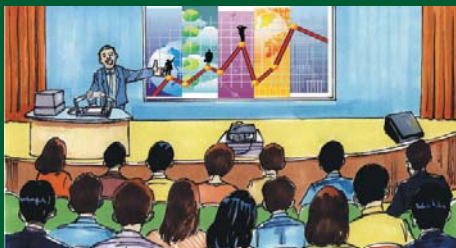
9. Annotate with a mouse

The user can easily highlight and annotate any images by connecting a mouse to the PS600



10. Local LCD Monitor

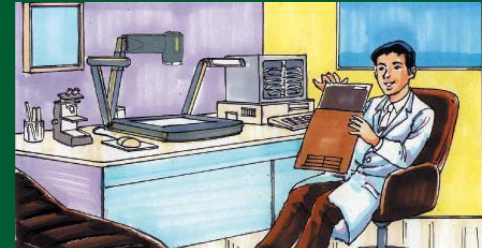
Available optional LCD monitor allows the presenter to preview the staging area.



Conference Seminar



Video Conferencing



Medical or Scientific research

Specifications

Image

- Pick-up Device : 1/3" Progress Scan CCD
- Total Pixels : 850K
- Effective Pixels : 800K
- Frame Rate : 22 Frames/ sec.
- Zooming : 12X Optical/ 4X Digital Zoom
- Focusing : Auto / Manual
- Head Rotation : 90/180/270 degrees
- Shooting Area :
360 x 270 mm (max) ; 32 x 24 mm (min)
14.1" x 10.6" (max.) ; 1.3" x 0.9" (min.)
- Step Zoom : Between A4 (full page) and A5 (half page)
- Image Mode : Photo/ Text/ Slide / Film /Gray/ Microscope
- White Balance : Auto / Manual
- Exposure : Auto / Manual
- Freeze : Yes
- Built in Storage : 64 Frames
- Portable Storage : CF card

Lighting

- Front Lamp Type : Cold Cathode Lamp x 2
- Backlight Lamp Type : Cold Cathode Lamp x 1
- Backlight Size : 5"x 4"

Input / Output

- VGA Input : HD-SUB 15 Pins Female
- VGA Output : HD-SUB 15 Pins Female, XGA 75 Hz / 60 Hz / SVGA 60 Hz
- Composite Video : NTSC/PAL RCA Jack
- Mouse Port : Standard PS2 Mouse
- USB : Standard USB Socket (Type B)
- DVI : DVI-I Digital & Analog Receptacle Connector
- RS232C : D-SUB 9 Pins Male
- Ethernet : RJ-45 10/100BaseT
- DC 12V Output : DC Jack, 750mA

Dimension

- Operating (L*W*H): 520 x 350 x 590 mm (20.5"x13.8"x 23.2")
- Folder (L*W*H): 520 x 350 x 150 mm (20.5"x 13.8" x 6")
- Weight : Around 5 kg (11 lb.)

Power

- Power Source : 100-240V
- Consumption : 15 Watts (Lamp off)/ 30 Watts (Lamp on)

Accessorie

- Power Cable
- VGA Cable
- USB Cable
- C-Video Cable
- Remote Control
- User Manual (CD)
- Quick Start Guide
- LCD module (optional)

Specifications are subject to change without notice.

Connection Configuration

